

SUZUKI

edc-15

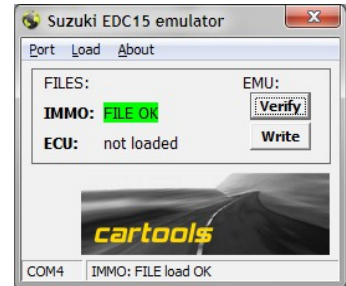
immo emulator

Purpose:

For Suzuki Vitarra with EDC15 ecu. Not Plug&Play, must store data from IMMO or ECU eeprom into emulator first.

Alignment:

- Use any K-line compatible adapter, connect emulator, launch configurator software. Press "Verify" to check connection. JMP on emulator board must be open.
- Load IMMO or ECU dump, store data into emulator. Then short JMP (place solder joint) to disable update. Emulator is ready for installation into ECU now.
- You can load ECU and IMMO dumps both to check if immodata match each other.
- You can verify if immodata stored into emulator match actual dump.

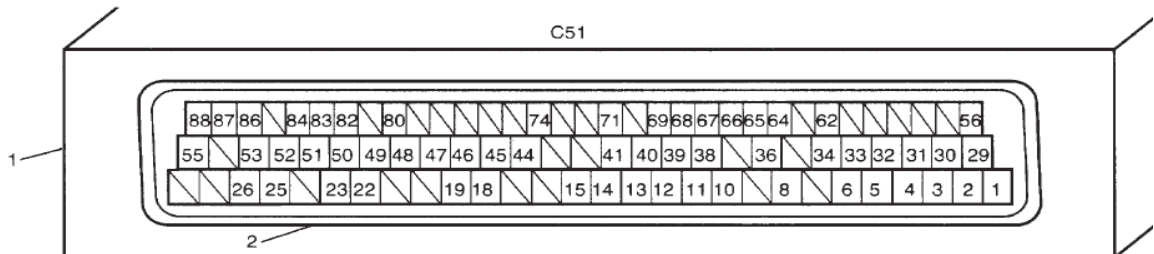
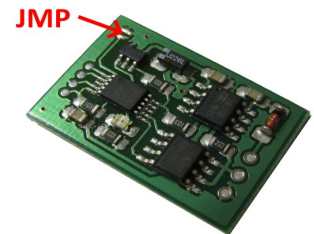


Installation:

Connect emulator to GND, +12 after MAIN relay and IMMO lines.

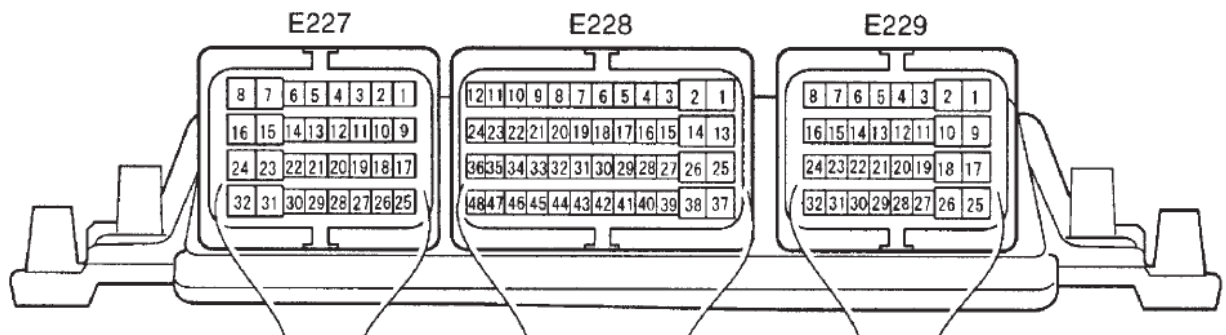
ECU: 1-plug version -

- **PWR** after main relay: C51-1, C51-29
- **GND**: C51-33, C51-49, C51-51, C51-53
- **IMMO**: C51-36



ECU 3-plug version:

- **PWR** after main relay: E228-1, E228-2
- **GND**: E227-32, E228-37, E228-38
- **IMMO**: E227-10



LED on emulator board:

Short blink at power-up, long blink if ecu authorized, 4 short blinks if immodata is not accepted.

