

SAAB SCL emulator

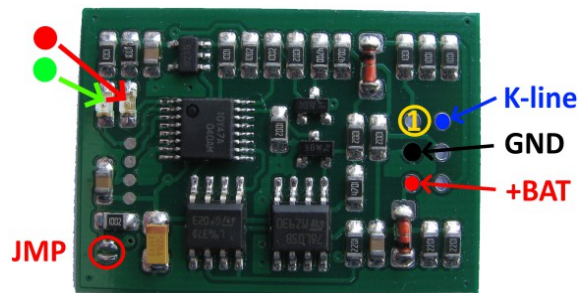
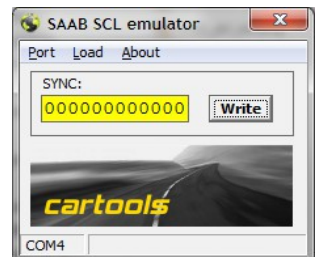
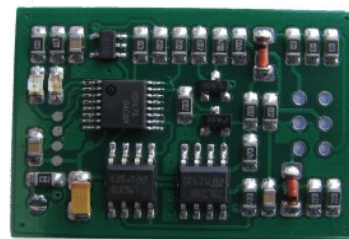
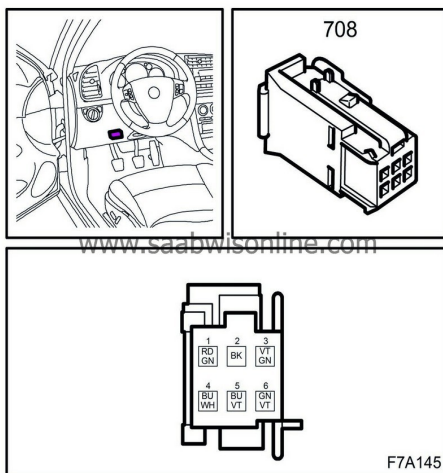
for SAAB 9-3

Usage:

For SAAB 9-3 cars produced from 2002 and up to end of production. To operate 6-byte CODE must be stored into emulator using K-line adapter and configurator software.

Configuration:

- Power emulator from 12v power source, attach K-line adapter, launch configurator software, choose COM port. **JMP must be OPEN** for configuration,
- CODE you can load from original CIM (93LC66) or SCL (24c04) dump or enter manually.
- Note: to load dump must connect and write any trash into emulator first to test connection!
- Store CODE into emulator, both LEDs must go on for short time.
- Place solder joint to **short JMP**. Emulator is ready for installation on car now. Solder wires directly or use standard 2.54 mm pitch terminal block for original connector as shown in picture. That's all to do, emulator is ready for use now.
- Note that original SCL is powered ON only when there is a request for status or request for open or close issued by CIM or ISM.



Pinout:

pin1 is marked on the opposite side of emulator board.

LED on emulator board:

- **RED**: SCL is in **LOCKED** state,
- **GREEN**: SCL is in **UNLOCKED** state.

If SCL is powered on, one of LEDs must go on. Note that LOCK action may fail if too much attempts made (ON / OFF - lock, unlock when car is not moving). CIM restarts and tries to lock SCL again after driving cycle is performed and car speed reached 20 km/h or more.

